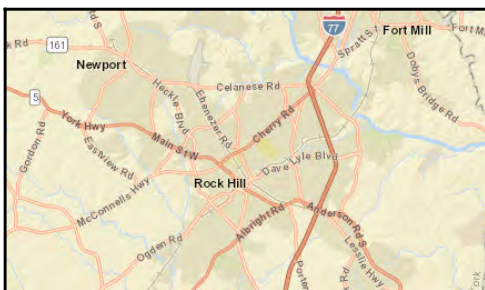
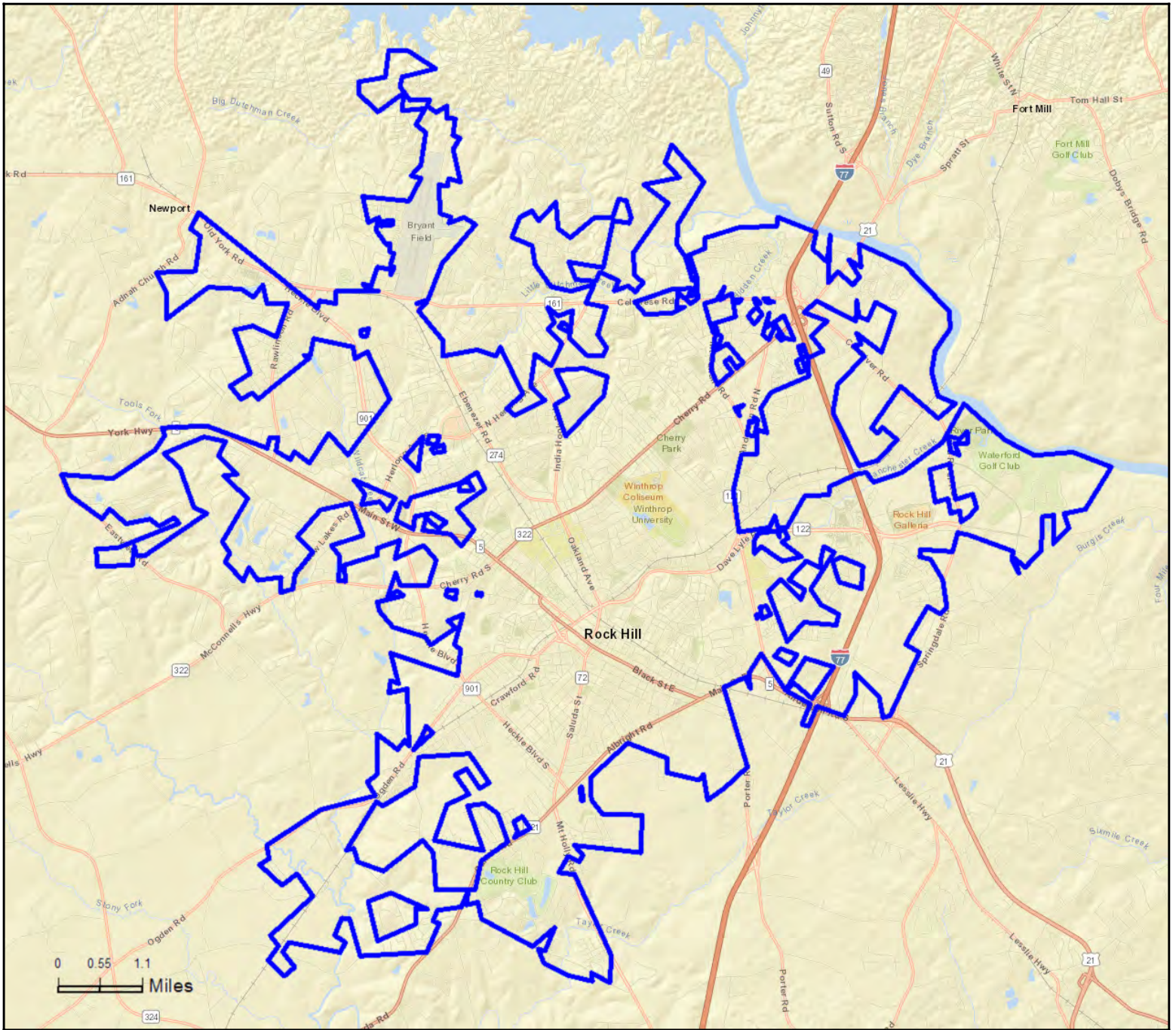


Site Map

Rock Hill City, SC
Rock Hill City, SC (4561405)
Geography: Place

Prepared by YCED



	Rock Hill cit...
Population Summary	
2000 Total Population	54,542
2010 Total Population	66,240
2016 Total Population	70,594
2016 Group Quarters	3,071
2021 Total Population	75,505
2016-2021 Annual Rate	1.35%
2016 Total Daytime Population	83,949
Workers	47,347
Residents	36,602
Household Summary	
2000 Households	20,593
2000 Average Household Size	2.50
2010 Households	25,999
2010 Average Household Size	2.43
2016 Households	27,752
2016 Average Household Size	2.43
2021 Households	29,752
2021 Average Household Size	2.43
2016-2021 Annual Rate	1.40%
2010 Families	16,084
2010 Average Family Size	3.04
2016 Families	17,141
2016 Average Family Size	3.04
2021 Families	18,220
2021 Average Family Size	3.06
2016-2021 Annual Rate	1.23%
Housing Unit Summary	
2000 Housing Units	22,313
Owner Occupied Housing Units	53.9%
Renter Occupied Housing Units	38.3%
Vacant Housing Units	7.7%
2010 Housing Units	29,206
Owner Occupied Housing Units	47.4%
Renter Occupied Housing Units	41.6%
Vacant Housing Units	11.0%
2016 Housing Units	31,178
Owner Occupied Housing Units	47.3%
Renter Occupied Housing Units	41.7%
Vacant Housing Units	11.0%
2021 Housing Units	33,390
Owner Occupied Housing Units	47.2%
Renter Occupied Housing Units	41.9%
Vacant Housing Units	10.9%
Median Household Income	
2016	\$42,108
2021	\$48,000
Median Home Value	
2016	\$143,230
2021	\$177,821
Per Capita Income	
2016	\$23,481
2021	\$25,734
Median Age	
2010	32.0
2016	34.2
2021	34.9

Data Note: Household population includes persons not residing in group quarters. Average Household Size is the household population divided by total households. Persons in families include the householder and persons related to the householder by birth, marriage, or adoption. Per Capita Income represents the income received by all persons aged 15 years and over divided by the total population.

Source: U.S. Census Bureau, Census 2010 Summary File 1. Esri forecasts for 2016 and 2021 Esri converted Census 2000 data into 2010 geography.

	Rock Hill cit...
2016 Households by Income	
Household Income Base	27,749
<\$15,000	16.1%
\$15,000 - \$24,999	13.3%
\$25,000 - \$34,999	12.9%
\$35,000 - \$49,999	14.0%
\$50,000 - \$74,999	17.6%
\$75,000 - \$99,999	11.4%
\$100,000 - \$149,999	9.5%
\$150,000 - \$199,999	3.1%
\$200,000+	2.1%
Average Household Income	\$58,646
2021 Households by Income	
Household Income Base	29,752
<\$15,000	15.6%
\$15,000 - \$24,999	14.8%
\$25,000 - \$34,999	9.2%
\$35,000 - \$49,999	11.6%
\$50,000 - \$74,999	18.5%
\$75,000 - \$99,999	12.5%
\$100,000 - \$149,999	11.6%
\$150,000 - \$199,999	3.7%
\$200,000+	2.4%
Average Household Income	\$64,321
2016 Owner Occupied Housing Units by Value	
Total	14,748
<\$50,000	8.3%
\$50,000 - \$99,999	20.0%
\$100,000 - \$149,999	25.1%
\$150,000 - \$199,999	18.8%
\$200,000 - \$249,999	11.2%
\$250,000 - \$299,999	6.1%
\$300,000 - \$399,999	5.6%
\$400,000 - \$499,999	1.9%
\$500,000 - \$749,999	2.1%
\$750,000 - \$999,999	0.4%
\$1,000,000 +	0.5%
Average Home Value	\$173,744
2021 Owner Occupied Housing Units by Value	
Total	15,778
<\$50,000	5.8%
\$50,000 - \$99,999	15.3%
\$100,000 - \$149,999	15.7%
\$150,000 - \$199,999	23.7%
\$200,000 - \$249,999	17.5%
\$250,000 - \$299,999	9.9%
\$300,000 - \$399,999	6.2%
\$400,000 - \$499,999	2.0%
\$500,000 - \$749,999	2.8%
\$750,000 - \$999,999	0.5%
\$1,000,000 +	0.5%
Average Home Value	\$199,910

Data Note: Income represents the preceding year, expressed in current dollars. Household income includes wage and salary earnings, interest dividends, net rents, pensions, SSI and welfare payments, child support, and alimony.

Source: U.S. Census Bureau, Census 2010 Summary File 1. Esri forecasts for 2016 and 2021 Esri converted Census 2000 data into 2010 geography.

Community Profile

Rock Hill City, SC
 Rock Hill City, SC (4561405)
 Geography: Place

Prepared by YCED

	Rock Hill cit...
2010 Population by Age	
Total	66,240
0 - 4	7.4%
5 - 9	6.7%
10 - 14	6.3%
15 - 24	18.7%
25 - 34	15.1%
35 - 44	13.4%
45 - 54	12.3%
55 - 64	9.7%
65 - 74	5.4%
75 - 84	3.3%
85 +	1.8%
18 +	75.6%
2016 Population by Age	
Total	70,593
0 - 4	6.7%
5 - 9	6.5%
10 - 14	6.2%
15 - 24	17.0%
25 - 34	14.8%
35 - 44	12.5%
45 - 54	12.2%
55 - 64	11.1%
65 - 74	7.5%
75 - 84	3.8%
85 +	1.8%
18 +	77.0%
2021 Population by Age	
Total	75,505
0 - 4	6.6%
5 - 9	6.3%
10 - 14	6.3%
15 - 24	16.4%
25 - 34	14.5%
35 - 44	12.7%
45 - 54	11.5%
55 - 64	11.0%
65 - 74	8.5%
75 - 84	4.3%
85 +	1.9%
18 +	77.2%
2010 Population by Sex	
Males	30,501
Females	35,739
2016 Population by Sex	
Males	32,886
Females	37,707
2021 Population by Sex	
Males	35,304
Females	40,201

Source: U.S. Census Bureau, Census 2010 Summary File 1. Esri forecasts for 2016 and 2021 Esri converted Census 2000 data into 2010 geography.

	Rock Hill cit...
2010 Population by Race/Ethnicity	
Total	66,240
White Alone	54.6%
Black Alone	38.3%
American Indian Alone	0.5%
Asian Alone	1.7%
Pacific Islander Alone	0.1%
Some Other Race Alone	2.7%
Two or More Races	2.1%
Hispanic Origin	5.7%
Diversity Index	60.2
2016 Population by Race/Ethnicity	
Total	70,594
White Alone	55.8%
Black Alone	36.0%
American Indian Alone	0.5%
Asian Alone	1.8%
Pacific Islander Alone	0.1%
Some Other Race Alone	3.3%
Two or More Races	2.4%
Hispanic Origin	6.8%
Diversity Index	61.4
2021 Population by Race/Ethnicity	
Total	75,505
White Alone	54.2%
Black Alone	36.4%
American Indian Alone	0.5%
Asian Alone	2.2%
Pacific Islander Alone	0.1%
Some Other Race Alone	3.8%
Two or More Races	2.9%
Hispanic Origin	7.8%
Diversity Index	63.4
2010 Population by Relationship and Household Type	
Total	66,240
In Households	95.5%
In Family Households	76.4%
Householder	24.3%
Spouse	14.9%
Child	30.6%
Other relative	4.0%
Nonrelative	2.5%
In Nonfamily Households	19.1%
In Group Quarters	4.5%
Institutionalized Population	0.9%
Noninstitutionalized Population	3.6%

Data Note: Persons of Hispanic Origin may be of any race. The Diversity Index measures the probability that two people from the same area will be from different race/ethnic groups.

Source: U.S. Census Bureau, Census 2010 Summary File 1. Esri forecasts for 2016 and 2021 Esri converted Census 2000 data into 2010 geography.

	Rock Hill cit...
2016 Population 25+ by Educational Attainment	
Total	44,928
Less than 9th Grade	3.3%
9th - 12th Grade, No Diploma	8.7%
High School Graduate	25.1%
GED/Alternative Credential	3.7%
Some College, No Degree	21.1%
Associate Degree	10.3%
Bachelor's Degree	18.0%
Graduate/Professional Degree	9.9%
2016 Population 15+ by Marital Status	
Total	56,910
Never Married	39.7%
Married	42.9%
Widowed	6.0%
Divorced	11.5%
2016 Civilian Population 16+ in Labor Force	
Civilian Employed	93.0%
Civilian Unemployed	7.0%
2016 Employed Population 16+ by Industry	
Total	34,687
Agriculture/Mining	0.3%
Construction	5.5%
Manufacturing	12.9%
Wholesale Trade	3.9%
Retail Trade	13.6%
Transportation/Utilities	5.0%
Information	2.1%
Finance/Insurance/Real Estate	6.1%
Services	47.5%
Public Administration	3.3%
2016 Employed Population 16+ by Occupation	
Total	34,686
White Collar	58.1%
Management/Business/Financial	11.9%
Professional	19.0%
Sales	11.8%
Administrative Support	15.4%
Services	19.6%
Blue Collar	22.3%
Farming/Forestry/Fishing	0.1%
Construction/Extraction	5.2%
Installation/Maintenance/Repair	2.7%
Production	8.1%
Transportation/Material Moving	6.1%
2010 Population By Urban/ Rural Status	
Total Population	66,240
Population Inside Urbanized Area	99.3%
Population Inside Urbanized Cluster	0.0%
Rural Population	0.7%

Source: U.S. Census Bureau, Census 2010 Summary File 1. Esri forecasts for 2016 and 2021 Esri converted Census 2000 data into 2010 geography.

	Rock Hill cit...
2010 Households by Type	
Total	25,999
Households with 1 Person	30.2%
Households with 2+ People	69.8%
Family Households	61.9%
Husband-wife Families	38.1%
With Related Children	17.6%
Other Family (No Spouse Present)	23.8%
Other Family with Male Householder	5.0%
With Related Children	2.9%
Other Family with Female Householder	18.8%
With Related Children	13.0%
Nonfamily Households	7.9%
All Households with Children	33.9%
Multigenerational Households	4.6%
Unmarried Partner Households	7.2%
Male-female	6.5%
Same-sex	0.6%
2010 Households by Size	
Total	25,999
1 Person Household	30.2%
2 Person Household	31.6%
3 Person Household	16.9%
4 Person Household	12.4%
5 Person Household	5.6%
6 Person Household	2.0%
7 + Person Household	1.3%
2010 Households by Tenure and Mortgage Status	
Total	25,999
Owner Occupied	53.3%
Owned with a Mortgage/Loan	42.5%
Owned Free and Clear	10.8%
Renter Occupied	46.7%
2010 Housing Units By Urban/ Rural Status	
Total Housing Units	29,206
Housing Units Inside Urbanized Area	99.3%
Housing Units Inside Urbanized Cluster	0.0%
Rural Housing Units	0.7%

Data Note: Households with children include any households with people under age 18, related or not. Multigenerational households are families with 3 or more parent-child relationships. Unmarried partner households are usually classified as nonfamily households unless there is another member of the household related to the householder. Multigenerational and unmarried partner households are reported only to the tract level. Esri estimated block group data, which is used to estimate polygons or non-standard geography.

Source: U.S. Census Bureau, Census 2010 Summary File 1. Esri forecasts for 2016 and 2021 Esri converted Census 2000 data into 2010 geography.

Rock Hill City, SC
Rock Hill City, SC (4561405)
Geography: Place

Prepared by YCED

Rock Hill cit...

Top 3 Tapestry Segments

1. Bright Young Professionals
2. Middleburg (4C)
3. Hardscrabble Road (8G)

2016 Consumer Spending

Apparel & Services: Total \$	\$43,446,866
Average Spent	\$1,565.54
Spending Potential Index	78
Education: Total \$	\$29,208,999
Average Spent	\$1,052.50
Spending Potential Index	74
Entertainment/Recreation: Total \$	\$61,589,621
Average Spent	\$2,219.29
Spending Potential Index	76
Food at Home: Total \$	\$109,268,172
Average Spent	\$3,937.31
Spending Potential Index	79
Food Away from Home: Total \$	\$67,539,350
Average Spent	\$2,433.68
Spending Potential Index	79
Health Care: Total \$	\$110,592,070
Average Spent	\$3,985.01
Spending Potential Index	75
HH Furnishings & Equipment: Total \$	\$37,607,889
Average Spent	\$1,355.14
Spending Potential Index	77
Personal Care Products & Services: Total \$	\$15,522,120
Average Spent	\$559.32
Spending Potential Index	76
Shelter: Total \$	\$336,436,144
Average Spent	\$12,122.95
Spending Potential Index	78
Support Payments/Cash Contributions/Gifts in Kind: Total \$	\$48,775,588
Average Spent	\$1,757.55
Spending Potential Index	76
Travel: Total \$	\$37,397,183
Average Spent	\$1,347.55
Spending Potential Index	72
Vehicle Maintenance & Repairs: Total \$	\$22,076,545
Average Spent	\$795.49
Spending Potential Index	77

Data Note: Consumer spending shows the amount spent on a variety of goods and services by households that reside in the area. Expenditures are shown by broad budget categories that are not mutually exclusive. Consumer spending does not equal business revenue. Total and Average Amount Spent Per Household represent annual figures. The Spending Potential Index represents the amount spent in the area relative to a national average of 100.

Source: Consumer Spending data are derived from the 2013 and 2014 Consumer Expenditure Surveys, Bureau of Labor Statistics. Esri.

Source: U.S. Census Bureau, Census 2010 Summary File 1. Esri forecasts for 2016 and 2021 Esri converted Census 2000 data into 2010 geography.